

# Cybr.net

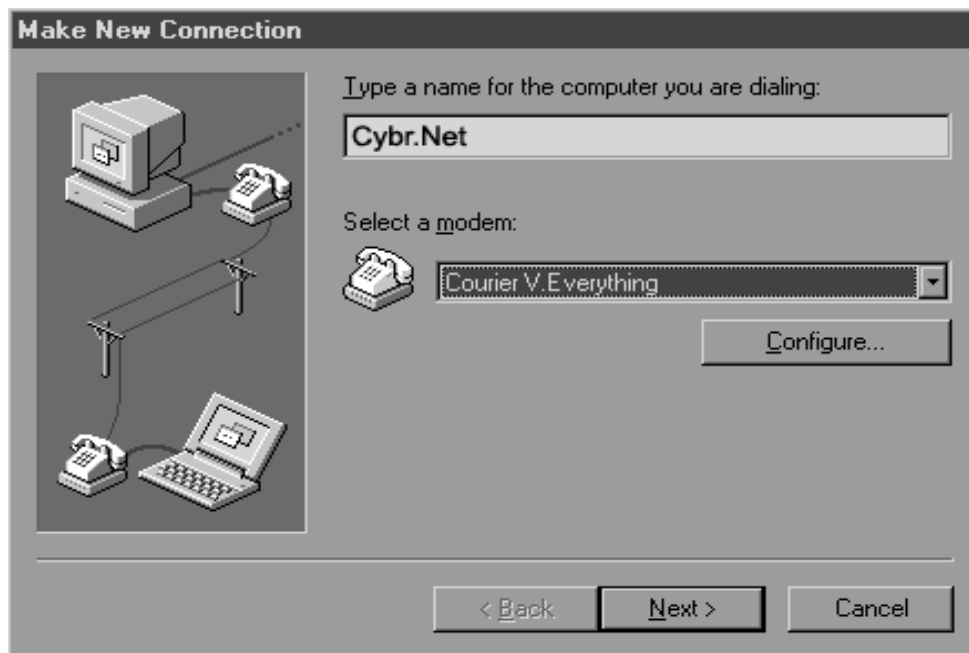
Internet Service Provider

## DIALUP NETWORKING FOR WINDOWS 95, 98, ME

From the Windows 95, 98 or Me **Start** menu, select **Programs**, then **Accessories**, then **Dial-Up Networking**. If you do not have it installed, then you'll need to [install the Dial-Up Networking software](#) first.

The first time you run Dial-Up Networking, you should be asked to make a new connection. If Dial-Up Networking does not appear as follows, find the **Make New Connection** icon and double click on it.

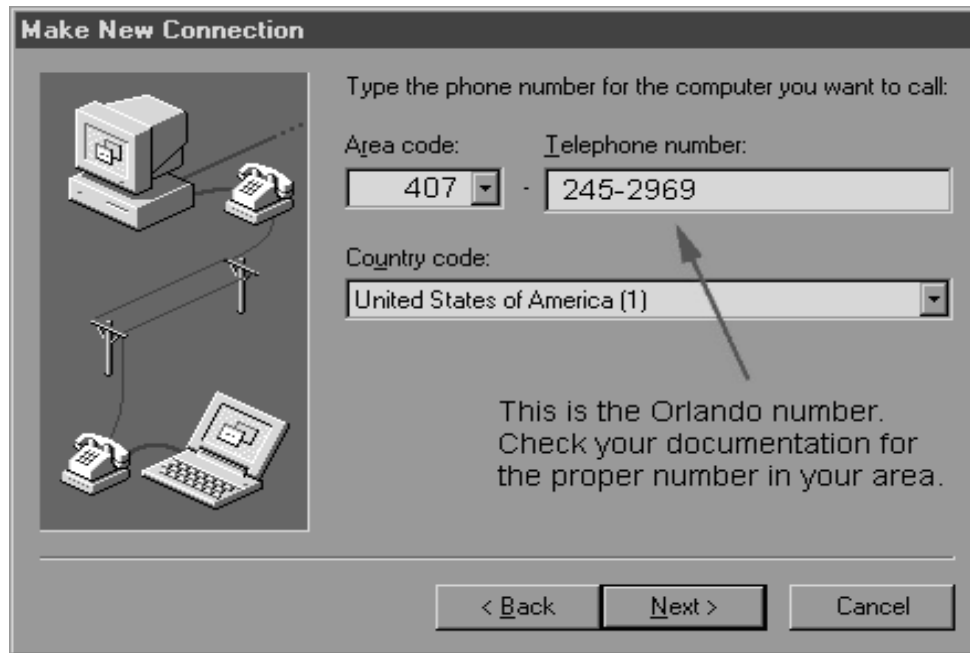
Set up the new connection as follows...



Make sure that the proper type of modem is selected. If you don't know what type of modem is installed on your computer, consult the documentation or user manual which accompanied your computer. If the type of modem which is installed on your computer is not listed, try one of the generic modem types or contact the computer or modem manufacturer.

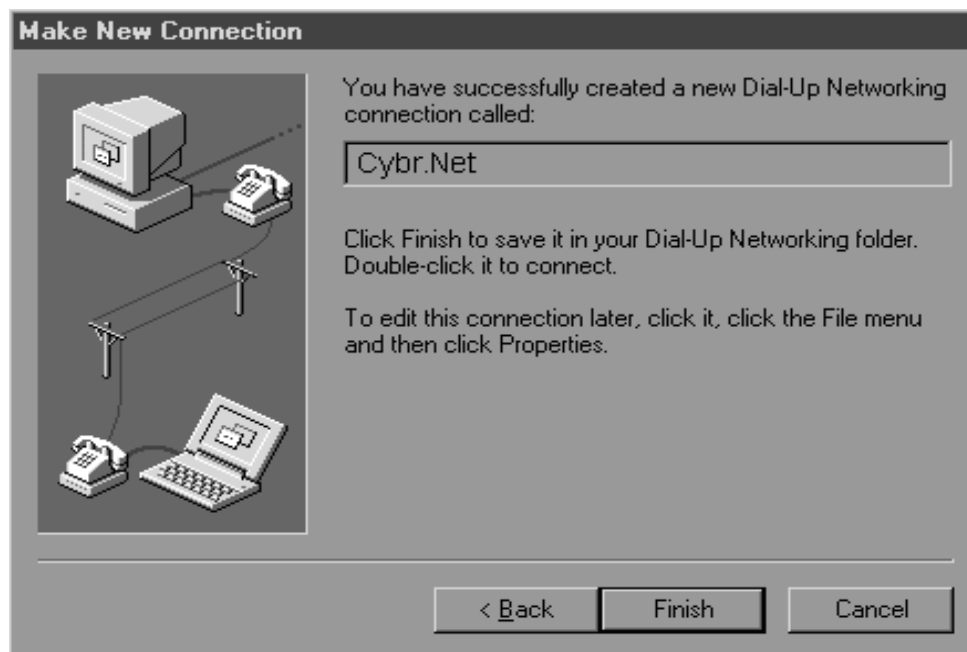
# Cybr.net

Internet Service Provider



## Phone Numbers

CYBR.NET has one modem dialup numbers for 56k and ISDN access:  
Orlando - 407-245-2969 Kissimmee - 407-572-0625



Click on the **Finish** button to finish creating the new connection.

# Cybr.net

Internet Service Provider

Double click on the **Cybr.Net** icon to open the connection. Set it up as follows...



The screenshot shows a Windows-style dialog box titled "Connect To" for the "Cybr.Net" connection. It includes the following fields and options:

- User name:** A text box containing "username@loginname.net".
- Password:** A text box containing "xxxxxxx".
- Save password**
- Phone number:** A text box containing "407 245 2969".
- Dialing from:** A dropdown menu currently set to "Default Location". A red arrow points to this dropdown.
- Buttons:** "Connect" and "Cancel".
- Footnote:** "This is the Orlando number. Check your documentation for the proper number for your area."

Make sure you set Username to your username (all lowercase) and Password to your password (case sensitive) correctly